



**Easton Telecom Services, LLC**  
 PO Box 550  
 Richfield, OH 44286  
 Customer Service: 800-222-8122  
 Fax Number: 800-227-8420  
 custservice@eastontel.com

**Invoice Information**

Sales Corporation  
 Account Number: 01013002  
 Invoice Number: 76393  
 Invoice Date: September 10, 2011  
 Due Date: October 5, 2011

Page 1 of 7

**Billing Summary Descriptions**

Previous Balance  
 09/02/2011 Payment Received - Thank You  
**Balance Forward**  
 08/10-09/09 Monthly Fee  
 Long Distance and Other Outbound Charges  
 800 Inbound Charges  
 Monthly Line Services  
 Data Line Charge  
 Taxes/Surcharges (see next page)  
**Current Charges**  
**Total Due**

**Charges / Credits**

	\$1,081.43
	\$1,081.43 CR
	<b>\$0.00</b>
	\$5.00
	\$7.22
	\$0.87
	\$1,110.21
	\$475.10
	\$154.96
	<b>\$1,753.36</b>
	<b>\$1,753.36</b>

**NOTE: This bill includes multiple locations!**  
**Customer Service Message**

Easton Wireless is now available nationwide!  
 Easton Wireless offers a variety of voice, text, data and mobile broadband plans at competitive prices. Voice, text and data plans can be shared for nominal monthly fees. Wireless service is bundled on this invoice with all of your other Easton services. Contact us today for pricing and availability.

Easton Local Customers - Your account may reflect increases approved by the Public Utilities Commission in your home state. These and other increases are the result of our underlying carrier increasing costs.

If your payment is not received by October 5, 2011 it will not be reflected on your next invoice.

*Easton Telecom Services, LLC*  
 PO Box 550  
 Richfield, OH 44286

Please Detach and Return Bottom Portion With Payment

**Remittance**

Account Number: 01013002  
 Invoice Number: 7623  
 Invoice Date: September 10, 2011  
 Due Date: October 5, 2011  
**Total Amount Due: \$1,753.36**

Amount Enclosed: \$ \_\_\_\_\_

**PLEASE SEND PAYMENT TO:**

Sales Corporation  
 9450 L&M Dr  
 Suite A  
 VALLEY OH 44125-4602

Easton Telecom Services, LLC  
 PO Box 347145  
 Pittsburgh, PA 15251-4145



**Management Reports**

**Tax and Surcharge Report**

	Qty	Rate	Amount
Federal Excise Tax		0.000	47.51
State Statutory Gross Receipts		0.000	0.04
State Sales Tax		0.000	0.06
State Sales Tax		0.00	87.48
County Sales Tax		0.000	0.52
County Sales Tax		0.000	1.29
County Sales Tax		0.0000	3.23
County Sales Tax		0.000	4.65
County Sales Tax		0.0	8.51
<b>Subtotal</b>			<b>\$153.29</b>

**Other Fees Report**

Federal FCC Regulatory Fee (Wireline)		0.00	0.02
Federal Carrier Cost Recovery		0.00	0.14
Federal USF Comb High Cost & School		0.00	0.69
State TRS	31	0.00	0.82
<b>Subtotal</b>			<b>\$1.67</b>
<b>Total</b>			<b>\$154.96</b>

**Line Charges Summary**

Charges	Count	Cost
08/16-09/09 CH1 LCP Unlimit Local Call Pack	1	00.00
08/16-09/09 DID Block MRC MRC on Block of 20	1	0.00
08/16-09/09 E911 T1 MRC E911 MRC	1	0.00
09/10-10/09 1MB/RIE Measured Business Line P	10	0.00
09/10-10/09 1MH / RIE Message Business Hunti	13	0.00
09/10-10/09 900/976 Block 900/976 Blocking	7	0.00
09/10-10/09 9PZLM - OH Federal USF-Multi Lin	23	00.00
09/10-10/09 9ZR - OH End User Access Multi-I	23	000.00
09/10-10/09 C6OTT/RIE C. O. Term w TT, Busin	10	0.00
09/10-10/09 CH1 LCP Unlimit Local Call Pack	1	00.00
09/10-10/09 CLT/REF B Business Additional Li	1	0.00
09/10-10/09 DID Block MRC MRC on Block of 20	1	0.00
09/10-10/09 E911 T1 MRC E911 MRC	1	0.00
09/10-10/09 E911/PSALI 610 E911 Database	7	0.00
09/10-10/09 FYW Call Forward Toll Free Routi	17	0.00
09/10-10/09 N8D/RIE Caller ID with Name	23	0.00
09/10-10/09 NALDC/RIE Network Access Line, A	6	0.00
09/10-10/09 NALDD/RIE Network Access Line, A	17	0.00
09/10-10/09 NP3 Non-Published Service	1	0.00
09/10-10/09 NSD/RIE Caller ID	23	0.00
09/10-10/09 NSR Number Portability Surcharge	23	0.00
09/10-10/09 OBQTT/RIE CO Term with TT / Pkg	13	0.00
09/10-10/09 PGO9K - 3 Yr Bus Local Calling U	23	000.00
09/10-10/09 QBPU/RIE Unlimited Local Usage	23	0.00
09/10-10/09 RTV1N Toll Restriction 900/970	23	0.00
09/10-10/09 UNEP CFA 610 Cross Connection Ch	7	0.00
09/10-10/09 UNEP Port 610 DS0 Port Charge	7	00.00
09/10-10/09 UNEP Zone B 610 Business Loop -	5	00.00
09/10-10/09 UNEP Zone D 610 Business Loop -	2	00.00
09/10-10/09 UXT18 911 Emergency Local Surcha	6	0.00
09/10-10/09 UXT22 911 Emergency Local Surcha	6	0.00
09/10-10/09 UXT43 911 Emergency Local Surcha	5	0.00
09/10-10/09 UXT76 911 Emergency Local Surcha	6	0.00
Day Calls to Band 5	4	0.00
Free Calls	14	0.00
Free Minutes	6	0.00
08/16-09/09 ISDN-PRI Port MRC	1	000.00
09/10-10/09 ISDN-PRI Port MRC	1	000.00
<b>Total</b>	<b>362</b>	<b>\$0,000.00</b>

**Total Usage By Line (Outbound)**

Line	Calls	Minutes	Cost
330 xxx-xxxx ISDN PRI	146	266.7	0.00
<b>Total</b>	<b>146</b>	<b>266.7</b>	<b>\$0.00</b>

**Ten Most Frequently Called Area Codes (Outbound)**

Area Code	% Calls	Calls	Minutes	Cost
724	18.18%	26	30.9	
330	15.38%	22	37.8	
216	11.89%	17	35.8	
412	6.29%	9	7.6	
636	5.59%	8	20.1	
614	4.20%	6	7.3	
847	3.50%	5	18.5	
410	2.80%	4	6.4	
440	2.80%	4	5.3	
770	2.80%	4	8.9	
OTHER	26.57%	38	86.6	

**10 Most Frequently Called Numbers (Outbound)**

Number	Location	Calls	Minutes	Cost
412 xxx-xxxx	Pittsburgh PA	8	7.3	0.00

(continued at top of right column)

**Management Reports**

330 xxx-xxxx	Akron	OH	4	17.0
410 xxx-xxxx	Parkville	MD	4	6.4
636 xxx-xxxx	Washington	MO	4	8.7
636 xxx-xxxx	Washington	MO	4	11.4
770 xxx-xxxx	Atlanta	GA	4	8.9
216 xxx-xxxx	Cleveland	OH	3	16.9
330 xxx-xxxx	Winona	OH	3	9.9
330 xxx-xxxx	Lisbon	OH	3	2.8
419 xxx-xxxx	Bryan	OH	3	5.8

**Ten Most Frequently Called Cities (Outbound)**

Location	Calls	Minutes	Cost
Cleveland OH	9	27.2	
Lisbon OH	9	8.5	
Pittsburgh PA	9	7.6	
Independnc OH	8	8.6	
New Castle PA	8	13.4	
Washington MO	8	20.1	
Akron OH	6	17.6	
Columbus OH	6	7.3	
Half Day IL	5	18.5	
Sharpsvl PA	5	7.0	

**Ten Most Expensive Calls (Outbound)**

Date	Number	Location	Minutes	Cost
09/01	216 xxx-xxxx	Cleveland OH	16.0	
08/30	330 xxx-xxxx	Akron OH	13.0	
08/30	847 xxx-xxxx	Half Day IL	9.8	
08/16	708 xxx-xxxx	Maywood IL	6.8	
09/02	330 xxx-xxxx	Winona OH	5.5	
08/30	847 xxx-xxxx	Half Day IL	6.2	
08/29	636 xxx-xxxx	Washington MO	6.5	
09/02	216 xxx-xxxx	Independnc OH	4.7	

**Usage By Lata**

Lata	Calls	Min	Cost
132/New York City, NY	1	3.5	
136/Syracuse, NY	1	6.3	
228/Philadelphia, PA	2	5.8	
230/Altoona, PA	1	0.6	
234/Pittsburgh, PA	35	38.5	
238/Baltimore, MD	4	6.4	
320/Cleveland, OH	21	41.1	
322/Youngstown, OH	10	9.0	
324/Columbus, OH	8	9.3	
325/Akron, OH	12	28.8	
326/Toledo, OH	3	5.8	
336/Indianapolis, IN	1	2.2	
340/Detroit, MI	2	5.4	
346/Lansing, MI	2	3.8	
356/Milwaukee, WI	2	2.2	
358/Chicago, IL	8	30.1	
438/Atlanta, GA	4	8.9	
446/Macon, GA	2	3.3	
470/Nashville, TN	1	4.7	
520/St. Louis, MO	8	20.1	
522/Springfield, MO	2	2.9	
552/Dallas, TX	1	0.3	
554/Longview, TX	2	5.8	
628/Minneapolis, MN	1	0.6	
656/Denver, CO	1	1.3	
730/Los Angeles, CA	1	0.4	
920/Hartford, CT	1	0.3	
922/Cincinnati, OH	2	6.7	
924/Erie, PA	3	9.2	
952/Tampa, FL	1	1.9	
<b>Total</b>	<b>143</b>	<b>265.2</b>	

**Ten Longest Duration Calls (Outbound)**

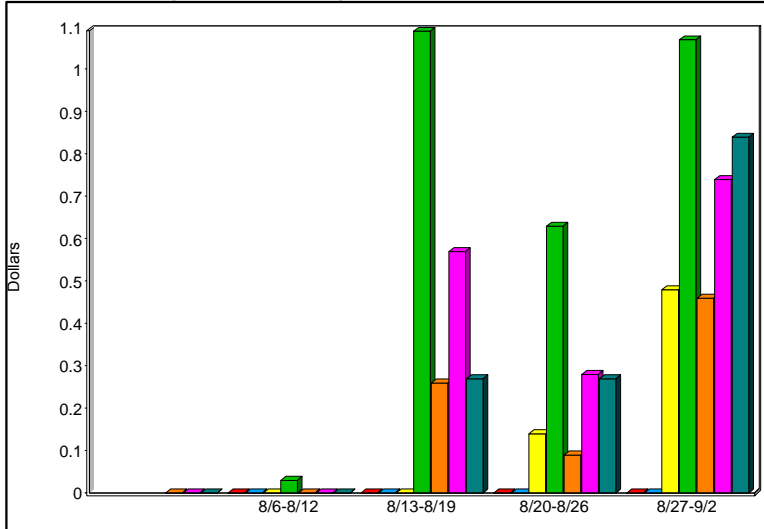
Date	Number	Location	Minutes	Cost
09/01	216 xxx-xxxx	Cleveland OH	16.0	
08/30	330 xxx-xxxx	Akron OH	13.0	
08/30	847 xxx-xxxx	Half Day IL	9.8	
08/16	708 xxx-xxxx	Maywood IL	16.8	
08/29	636 xxx-xxxx	Washington MO	6.5	
09/02	513 xxx-xxxx	Cincinnati OH	6.4	
08/18	315 xxx-xxxx	Syracuse NY	6.3	
08/30	847 xxx-xxxx	Half Day IL	6.2	
09/02	330 xxx-xxxx	Winona OH	5.5	
09/02	216 xxx-xxxx	Independnc OH	4.7	

Management Reports

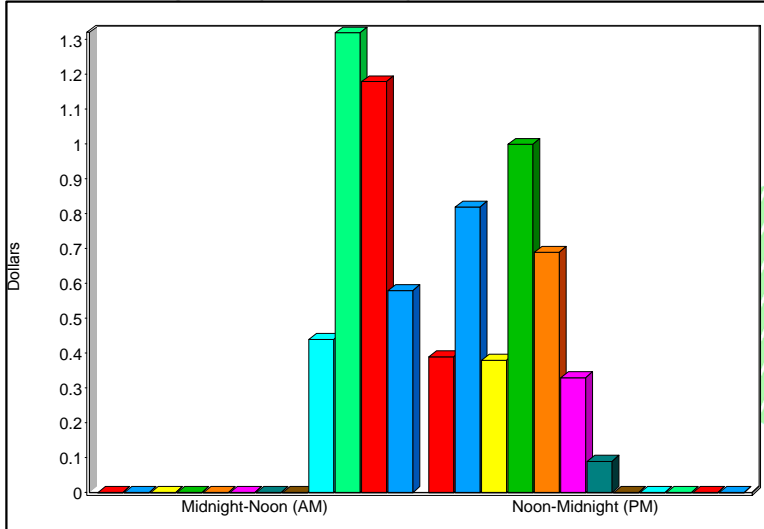
Outbound Usage By Line

330 xxx-xxxx [redacted] \$7.22

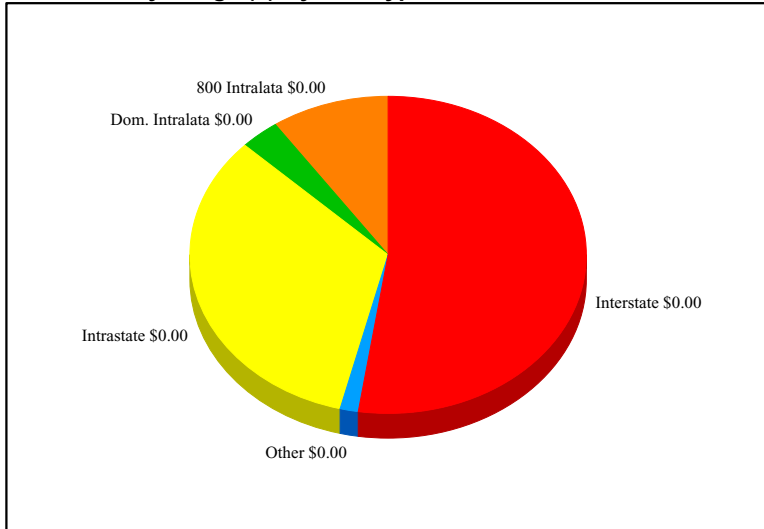
Outbound Daily Call Summary 08/03/2011 To 09/02/2011



Outbound Usage (\$) By Time Of Day



Total Monthly Usage (\$) By Call Type



Type	% \$	Calls	Minutes	Cost
800 Intralata	9.64	5	20.0	
Dom. Intralata	3.21	10	9.0	
Other	1.48	5	3.7	
Interstate	52.41	87	164.5	
Intrastate	33.25	46	91.7	

Management Reports

Usage By Location

Type	Switch/Ded	Calls	Minutes	Cost
<b>1635 Market Ave ANYWHERE OH</b>		<b>0113600</b>		
Local Calls	S	264	552.0	
Local Service	S	73	0.0	
<b>Location Totals</b>		<b>337</b>	<b>552.0</b>	
<b>175 South St ANYWHERE OH</b>		<b>01113005</b>		
Local Calls	S	153	227.1	
Local Service	S	25	0.0	
<b>Location Totals</b>		<b>178</b>	<b>227.1</b>	
<b>3180 Sassafras Way ANYWHERE OH</b>		<b>01013002</b>		
800 Interstate	S	2	2.2	
800 Intralata	S	5	20.0	
<b>Location Totals</b>		<b>7</b>	<b>22.2</b>	
<b>3904 Tiffin Av ANYWHERE OH</b>		<b>01113606</b>		
Local Calls	S	164	293.0	
Local Service	S	78	0.0	
<b>Location Totals</b>		<b>242</b>	<b>293.0</b>	
<b>643 N Meridian Rd ANYWHERE OH</b>		<b>01113600</b>		
Local Service	S	10	0.0	
<b>Location Totals</b>		<b>10</b>	<b>0.0</b>	
<b>8573 East Av ANYWHERE OH</b>		<b>01113007</b>		
Local Calls	S	64	106.0	
Local Service	S	65	0.0	
<b>Location Totals</b>		<b>129</b>	<b>106.0</b>	
<b>9450 Allen Dr ANYWHERE OH</b>		<b>01113003</b>		
Local Calls	S	184	184.0	
Local Service	S	79	0.0	
<b>Location Totals</b>		<b>263</b>	<b>184.0</b>	
<b>ISDN PRI ANYWHERE OH</b>		<b>01115002</b>		
1+ International	S	3	1.5	
1+ Interstate	S	87	164.5	
1+ Intralata	S	10	9.0	
1+ Intrastate	S	46	91.7	
Local Calls	S	196	351.0	
Local Service	S	6	0.0	
<b>Location Totals</b>		<b>348</b>	<b>617.7</b>	

Master Location Charge Summary

Long Distance	Local	Data	Other	Taxes	Total
<b>3180 Sassafras Way ANYWHERE PA</b>					
0.87	0.000	0.00	5.00	0.12	5.99
<b>9450 Allen Dr ANYWHERE OH</b>					
0.00	207.420	0.00	0.00	22.39	229.81
<b>1635 Market Ave S ANYWHERE OH</b>					
0.00	210.420	0.00	0.00	18.51	228.93
<b>175 E South St ANYWHERE OH</b>					
0.00	115.000	0.00	0.00	11.06	126.06
<b>3904 Tiffin Av ANYWHERE OH</b>					
0.00	207.420	0.00	0.00	19.81	227.23
<b>8573 East Av ANYWHERE OH</b>					
0.00	172.850	0.00	0.00	16.06	188.91
<b>643 N Meridian Rd ANYWHERE OH</b>					
0.00	58.000	0.00	0.00	5.71	63.71
<b>ISDN PRI ANYWHERE OH</b>					
7.22	139.100	475.10	0.00	61.30	682.72
<b>Location Totals</b>					
<b>\$8.09</b>	<b>\$1110.210</b>	<b>\$475.10</b>	<b>\$5.00</b>	<b>\$154.96</b>	<b>\$1753.36</b>

Item	Date	Time	Number	Location	Min	Cost
------	------	------	--------	----------	-----	------

Main Billing Number: 330 ISDN PRI

Calls For Line: 330 ISDN PRI



Item	Line Fees	Qty	Min	Cost
369	09/10-10/09 N8D/RIE Caller ID with Name	1		0.000
370	09/10-10/09 FYW Call Forward Toll Free Routi	1		0.000
371	09/10-10/09 1MH / RIE Message Business Hunti	1		0.000
372	09/10-10/09 QBPUL/RIE Unlimited Local Usage	1		0.000
373	09/10-10/09 OBQTT/RIE CO Term with TT / Pkg	1		0.000
374	09/10-10/09 NALDD/RIE Network Access Line, A	1		0.000
<b>Total For Line: 419 XXX-XXXX</b>				<b>\$00.000</b>
<b>Fees for Line: 419 XXX-XXXX</b>				
375	09/10-10/09 PGO9K - 3 Yr Bus Local Calling U	1		00.000
376	09/10-10/09 9ZR - OH End User Access Multi-I	1		0.000
377	09/10-10/09 9PZLM - OH Federal USF-Multi Lin	1		0.000
378	09/10-10/09 UXT22 911 Emergency Local Surcha	1		0.000
379	09/10-10/09 RTV1N Toll Restriction 900/970	1		0.000
380	09/10-10/09 NSR Number Portability Surcharge	1		0.000
381	09/10-10/09 NSD/RIE Caller ID	1		0.000
382	09/10-10/09 N8D/RIE Caller ID with Name	1		0.000
383	09/10-10/09 FYW Call Forward Toll Free Routi	1		0.000
384	09/10-10/09 1MH / RIE Message Business Hunti	1		0.000
385	09/10-10/09 QBPUL/RIE Unlimited Local Usage	1		0.000
386	09/10-10/09 OBQTT/RIE CO Term with TT / Pkg	1		0.000
387	09/10-10/09 NALDD/RIE Network Access Line, A	1		0.000
388	Free Calls	17	29.0	0.000
<b>Total For Line: 419 XXX-XXXX</b>				<b>\$00.000</b>
<b>Fees for Line: 419 XXX-XXXX</b>				
389	09/10-10/09 PGO9K - 3 Yr Bus Local Calling U	1		00.000
390	09/10-10/09 9ZR - OH End User Access Multi-I	1		0.000
391	09/10-10/09 9PZLM - OH Federal USF-Multi Lin	1		0.000
392	09/10-10/09 UXT22 911 Emergency Local Surcha	1		0.000
393	09/10-10/09 RTV1N Toll Restriction 900/970	1		0.000
394	09/10-10/09 NSR Number Portability Surcharge	1		0.000
395	09/10-10/09 NSD/RIE Caller ID	1		0.000
396	09/10-10/09 N8D/RIE Caller ID with Name	1		0.000
397	09/10-10/09 FYW Call Forward Toll Free Routi	1		0.000
398	09/10-10/09 1MH / RIE Message Business Hunti	1		0.000
399	09/10-10/09 QBPUL/RIE Unlimited Local Usage	1		0.000
400	09/10-10/09 OBQTT/RIE CO Term with TT / Pkg	1		0.000
401	09/10-10/09 NALDD/RIE Network Access Line, A	1		0.000
402	Free Calls	53	115.0	0.000
<b>Total For Line: 419 XXX-XXXX</b>				<b>\$00.000</b>
<b>Fees for Line: 419 XXX-XXXX</b>				
403	09/10-10/09 PGO9K - 3 Yr Bus Local Calling U	1		00.000
404	09/10-10/09 9ZR - OH End User Access Multi-I	1		0.000
405	09/10-10/09 9PZLM - OH Federal USF-Multi Lin	1		0.000
406	09/10-10/09 UXT22 911 Emergency Local Surcha	1		0.000
407	09/10-10/09 RTV1N Toll Restriction 900/970	1		0.000
408	09/10-10/09 NSR Number Portability Surcharge	1		0.000
409	09/10-10/09 NSD/RIE Caller ID	1		0.000
410	09/10-10/09 N8D/RIE Caller ID with Name	1		0.000
411	09/10-10/09 FYW Call Forward Toll Free Routi	1		0.000
412	09/10-10/09 1MH / RIE Message Business Hunti	1		0.000
413	09/10-10/09 QBPUL/RIE Unlimited Local Usage	1		0.000
414	09/10-10/09 OBQTT/RIE CO Term with TT / Pkg	1		0.000
415	09/10-10/09 NALDD/RIE Network Access Line, A	1		0.000
416	Free Calls	68	118.0	0.000
<b>Total For Line: 419 XXX-XXXX</b>				<b>\$00.000</b>
<b>Fees for Line: 419 XXX-XXXX</b>				
417	09/10-10/09 PGO9K - 3 Yr Bus Local Calling U	1		00.000
418	09/10-10/09 9ZR - OH End User Access Multi-I	1		0.000
419	09/10-10/09 9PZLM - OH Federal USF-Multi Lin	1		0.000
420	09/10-10/09 UXT22 911 Emergency Local Surcha	1		0.000
421	09/10-10/09 RTV1N Toll Restriction 900/970	1		0.000
422	09/10-10/09 NSR Number Portability Surcharge	1		0.000
423	09/10-10/09 NSD/RIE Caller ID	1		0.000
424	09/10-10/09 N8D/RIE Caller ID with Name	1		0.000
425	09/10-10/09 FYW Call Forward Toll Free Routi	1		0.000
426	09/10-10/09 QBPUL/RIE Unlimited Local Usage	1		0.000
427	09/10-10/09 1MB/RIE Measured Business Line P	1		0.000
428	09/10-10/09 C6OTT/RIE C. O. Term w TT, Busin	1		0.000
429	09/10-10/09 NALDD/RIE Network Access Line, A	1		0.000
430	Free Calls	26	31.0	0.000
<b>Total For Line: 419 XXX-XXXX</b>				<b>\$00.000</b>
<b>Fees for Line: 419 XXX-XXXX</b>				
431	09/10-10/09 PGO9K - 3 Yr Bus Local Calling U	1		00.000
432	09/10-10/09 9ZR - OH End User Access Multi-I	1		0.000
433	09/10-10/09 9PZLM - OH Federal USF-Multi Lin	1		0.000
434	09/10-10/09 UXT22 911 Emergency Local Surcha	1		0.000
435	09/10-10/09 RTV1N Toll Restriction 900/970	1		0.000
436	09/10-10/09 NSR Number Portability Surcharge	1		0.000
437	09/10-10/09 NSD/RIE Caller ID	1		0.000
438	09/10-10/09 N8D/RIE Caller ID with Name	1		0.000
439	09/10-10/09 FYW Call Forward Toll Free Routi	1		0.000
440	09/10-10/09 QBPUL/RIE Unlimited Local Usage	1		0.000
441	09/10-10/09 1MB/RIE Measured Business Line P	1		0.000
442	09/10-10/09 C6OTT/RIE C. O. Term w TT, Busin	1		0.000
443	09/10-10/09 NALDD/RIE Network Access Line, A	1		0.000
<b>Total For Line: 419 XXX-XXXX</b>				<b>\$00.000</b>
<b>Fees for Line: 440 XXX-XXXX</b>				
444	09/10-10/09 PGO9K - 3 Yr Bus Local Calling U	1		00.000
445	09/10-10/09 9ZR - OH End User Access Multi-I	1		0.000
446	09/10-10/09 9PZLM - OH Federal USF-Multi Lin	1		0.000
447	09/10-10/09 UXT43 911 Emergency Local Surcha	1		0.000
448	09/10-10/09 RTV1N Toll Restriction 900/970	1		0.000
449	09/10-10/09 NSR Number Portability Surcharge	1		0.000
450	09/10-10/09 NSD/RIE Caller ID	1		0.000
451	09/10-10/09 N8D/RIE Caller ID with Name	1		0.000
452	09/10-10/09 FYW Call Forward Toll Free Routi	1		0.000
453	09/10-10/09 1MH / RIE Message Business Hunti	1		0.000
454	09/10-10/09 QBPUL/RIE Unlimited Local Usage	1		0.000

(continued at top of right column)

Item	Line Fees	Qty	Min	Cost
455	09/10-10/09 OBQTT/RIE CO Term with TT / Pkg	1		0.000
456	09/10-10/09 NALDD/RIE Network Access Line, A	1		0.000
457	Free Calls	18	24.0	0.000
<b>Total For Line: 440 XXX-XXXX</b>				<b>\$00.000</b>
<b>Fees for Line: 440 XXX-XXXX</b>				
458	09/10-10/09 PGO9K - 3 Yr Bus Local Calling U	1		00.000
459	09/10-10/09 9ZR - OH End User Access Multi-I	1		0.000
460	09/10-10/09 9PZLM - OH Federal USF-Multi Lin	1		0.000
461	09/10-10/09 UXT43 911 Emergency Local Surcha	1		0.000
462	09/10-10/09 RTV1N Toll Restriction 900/970	1		0.000
463	09/10-10/09 NSR Number Portability Surcharge	1		0.000
464	09/10-10/09 NSD/RIE Caller ID	1		0.000
465	09/10-10/09 N8D/RIE Caller ID with Name	1		0.000
466	09/10-10/09 FYW Call Forward Toll Free Routi	1		0.000
467	09/10-10/09 1MH / RIE Message Business Hunti	1		0.000
468	09/10-10/09 QBPUL/RIE Unlimited Local Usage	1		0.000
469	09/10-10/09 OBQTT/RIE CO Term with TT / Pkg	1		0.000
470	09/10-10/09 NALDD/RIE Network Access Line, A	1		0.000
471	Free Calls	30	54.0	0.000
<b>Total For Line: 440 XXX-XXXX</b>				<b>\$00.000</b>
<b>Fees for Line: 440 XXX-XXXX</b>				
472	09/10-10/09 PGO9K - 3 Yr Bus Local Calling U	1		00.000
473	09/10-10/09 9ZR - OH End User Access Multi-I	1		0.000
474	09/10-10/09 9PZLM - OH Federal USF-Multi Lin	1		0.000
475	09/10-10/09 UXT43 911 Emergency Local Surcha	1		0.000
476	09/10-10/09 RTV1N Toll Restriction 900/970	1		0.000
477	09/10-10/09 NSR Number Portability Surcharge	1		0.000
478	09/10-10/09 NSD/RIE Caller ID	1		0.000
479	09/10-10/09 N8D/RIE Caller ID with Name	1		0.000
480	09/10-10/09 FYW Call Forward Toll Free Routi	1		0.000
481	09/10-10/09 QBPUL/RIE Unlimited Local Usage	1		0.000
482	09/10-10/09 1MB/RIE Measured Business Line P	1		0.000
483	09/10-10/09 C6OTT/RIE C. O. Term w TT, Busin	1		0.000
484	09/10-10/09 NALDD/RIE Network Access Line, A	1		0.000
485	Free Calls	13	24.0	0.000
486	Day Calls to Band 5	1	1.0	0.000
<b>Total For Line: 440 XXX-XXXX</b>				<b>\$00.000</b>
<b>Fees for Line: 440 XXX-XXXX</b>				
487	09/10-10/09 PGO9K - 3 Yr Bus Local Calling U	1		00.000
488	09/10-10/09 9ZR - OH End User Access Multi-I	1		0.000
489	09/10-10/09 9PZLM - OH Federal USF-Multi Lin	1		0.000
490	09/10-10/09 UXT43 911 Emergency Local Surcha	1		0.000
491	09/10-10/09 RTV1N Toll Restriction 900/970	1		0.000
492	09/10-10/09 NSR Number Portability Surcharge	1		0.000
493	09/10-10/09 NSD/RIE Caller ID	1		0.000
494	09/10-10/09 N8D/RIE Caller ID with Name	1		0.000
495	09/10-10/09 FYW Call Forward Toll Free Routi	1		0.000
496	09/10-10/09 1MH / RIE Message Business Hunti	1		0.000
497	09/10-10/09 QBPUL/RIE Unlimited Local Usage	1		0.000
498	09/10-10/09 OBQTT/RIE CO Term with TT / Pkg	1		0.000
499	09/10-10/09 NALDD/RIE Network Access Line, A	1		0.000
<b>Total For Line: 440 XXX-XXXX</b>				<b>\$00.000</b>
<b>Fees for Line: 440 XXX-XXXX</b>				
500	09/10-10/09 PGO9K - 3 Yr Bus Local Calling U	1		00.000
501	09/10-10/09 9ZR - OH End User Access Multi-I	1		0.000
502	09/10-10/09 9PZLM - OH Federal USF-Multi Lin	1		0.000
503	09/10-10/09 UXT43 911 Emergency Local Surcha	1		0.000
504	09/10-10/09 RTV1N Toll Restriction 900/970	1		0.000
505	09/10-10/09 NSR Number Portability Surcharge	1		0.000
506	09/10-10/09 NSD/RIE Caller ID	1		0.000
507	09/10-10/09 N8D/RIE Caller ID with Name	1		0.000
508	09/10-10/09 FYW Call Forward Toll Free Routi	1		0.000
509	09/10-10/09 1MH / RIE Message Business Hunti	1		0.000
510	09/10-10/09 QBPUL/RIE Unlimited Local Usage	1		0.000
511	09/10-10/09 OBQTT/RIE CO Term with TT / Pkg	1		0.000
512	09/10-10/09 NALDD/RIE Network Access Line, A	1		0.000
513	Free Calls	2	3.0	0.000
<b>Total For Line: 440 XXX-XXXX</b>				<b>\$00.000</b>
<b>Monthly Line Services</b>				
<b>Total For Lines:</b>				<b>\$0000.00</b>
<b>Item Data Fees</b>				
<b>Fees for Line: CON/T1/E52202 PITBACGT0</b>				
<b>Fees For Circuitid: 92.HDU.701..OB ANYWHERE, OH</b>				
514	08/16-09/09 ISDN-PRI Port MRC	1	@ .00	000.00
515	09/10-10/09 ISDN-PRI Port MRC	1	@ .00	000.00
<b>Total For Leg: 92.DHU.2071..OB</b>				<b>\$000.00</b>
<b>Total For Line: CON/T1/E501202P/</b>				<b>\$000.00</b>
<b>Total For Data Lines: \$000.00</b>				